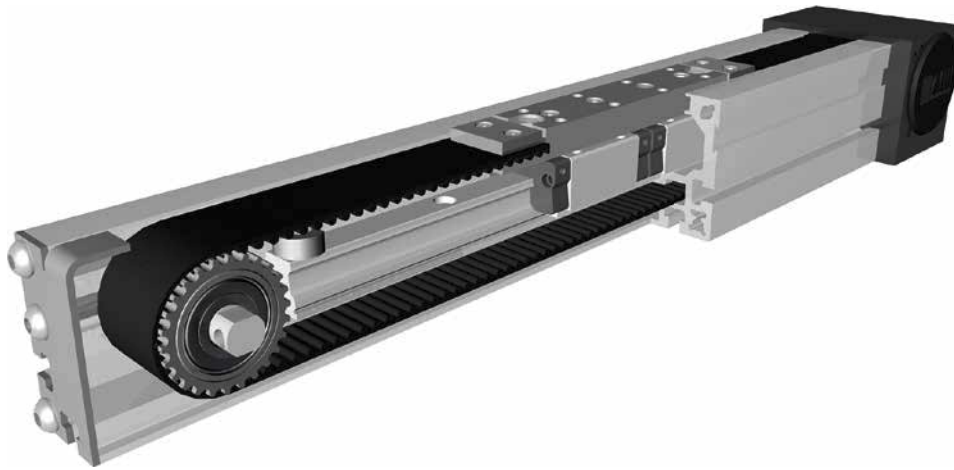


Belt drive

**Function:**

The guide body consists of an aluminium square profile with an integrated rail guide. The carriage is moved by means of a revolving interior timing belt. At the front face there is a timing belt deflection unit with integrated coupling claws integrated on two sides. The opposite front face is provided with a plate containing a tensioning device for the timing belt.

Mounting position:

Variable, max. one-piece-length: 6.000 mm.

Carriage connection:

By threaded holes.

Fixation:

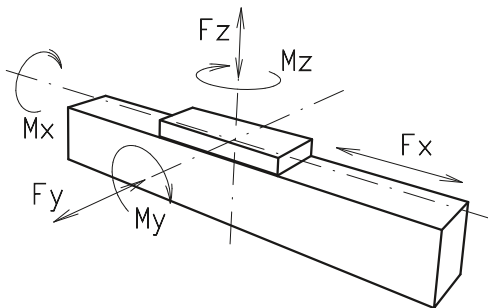
By T-slots and mounting sets. The linear axis can be combined with any T-slot profile.

Timing belt:

HTD with reinforcing steel mesh, no backlash when changing direction, repeatability ± 0.1 mm.

Carriage support:

In the standard version the carriage is positioned on two runner blocks which can be readjusted and maintained at one point. Two lubricating nipples are provided for relubrication of the positioning system.

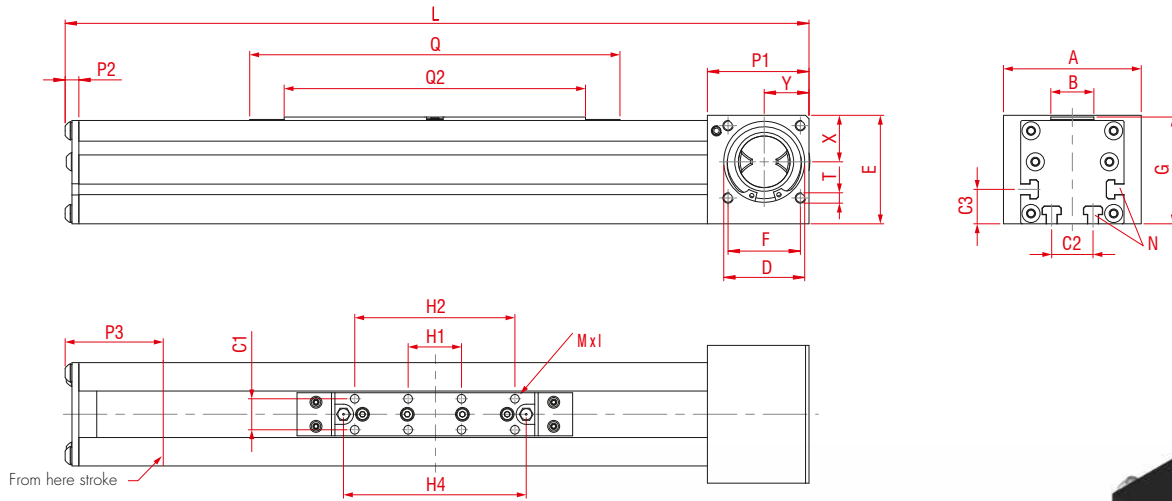
Forces and torques

Size	60	
permitted dyn. Forces*	5000 km	10000 km
F_x (N)	894	800
F_y (N)	1410	990
F_z (N)	3520	2500
M_x (Nm)	33	23
M_y (Nm)	104	73
M_z (Nm)	100	70
C (N)	7800	
All forces and torques related to the following:		
Vorhandener Wert	$\frac{F_y}{F_{y_{dyn}}} + \frac{F_z}{F_{z_{dyn}}} + \frac{M_x}{M_{x_{dyn}}} + \frac{M_y}{M_{y_{dyn}}} + \frac{M_z}{M_{z_{dyn}}} \leq 1$	
Tabellenwert		
No-load torque		
Nm	0,6	
Speed		
(m/s) max	5	
Tensile force		
permanent (N)	900	
0,2 s (N)	1000	
Geometrical moments of inertia of aluminium profile		
I_x mm ⁴	4,37x10 ⁵	
I_y mm ⁴	5,78x10 ⁵	
Elastic modulus N/mm ²	70000	

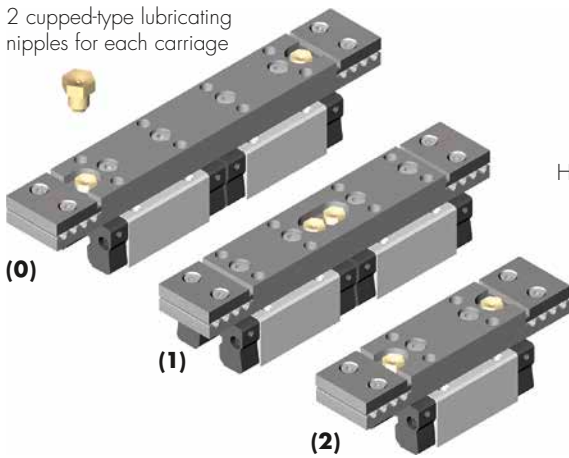
* referred to lifetime

Positioning system LSZ 60

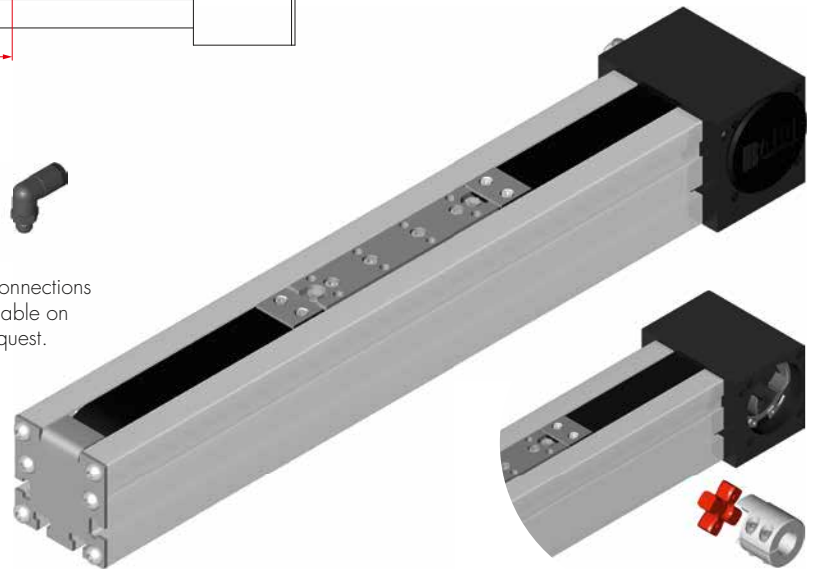
Dimensions (mm)



2 cupped-type lubricating nipples for each carriage



Hose connections available on request.

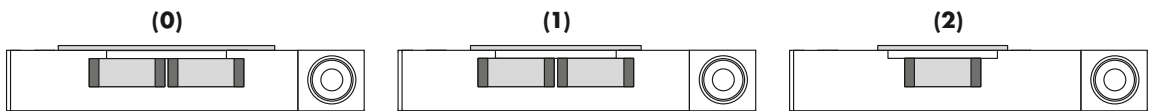


*For slide nuts refer to chapter 2.2 page 2

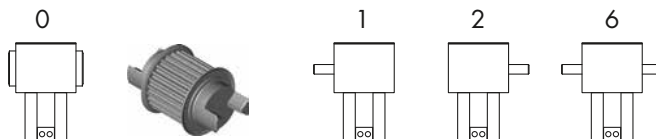
Size	Basic length L	A	B	C1	C2	C3	D	E	F	G	H1	H2	H4	MxI	N for	P1	P2	P3	Q	T for	X	Y	Basic weight	Weight per 100 mm
LSZ 60	274	80	25	18	24	20	47	63	42	62	31	93	106	M6x10	M5	59	6	55	160	M6	27	26	3,06 kg	0,53 kg

0 Choice of carriages:

Carriage	Q	L	Q2	H1	H2	H4
Version (0)	160	274	116	31	93	106
Version (1)	140	254	96	32	84	10
Version (2)	100	214	56	31	-	48



0 Drive version:



Belt table:

Code No.	Size	Belt	mm/rev.	Number of teeth
0 3	60	5M30	130	26

Shaft dimensions / Coupling claw:

Size	Shaft	Feather key	Coupling
60	14 x 35	5x5x28	14

LSZ 60 1 0 0 0 0 3 1 01500 — Basic length + stroke = total length

Sample ordering code:

LSZ60, standard body profile, double-sided coupling claw, 1226 mm stroke

15.1