

To: Distributors
Attn.: To Whom It May Concern
Date: August 6, 2015

Dear Sir,

We appreciate daily sales activities and cooperation to PISCO.

Information about appearance and dimensional change in Tube Fitting Standard Series, Tube Fitting PP Series, Tube Fitting SUS304 Series, Tube Fitting SUS303 like Corrosivity Series, and Stop Fitting Series

We will execute following appearance and dimension changes in Tube Fitting Standard Series, Tube Fitting PP Series, Tube Fitting SUS304 Series, Tube Fitting SUS303 like Corrosivity Series and some part of Stop Fitting Series due to mold update.

We apologize for the inconvenience caused by this change but hope you understand and welcome our updated models.

Sincerely yours,

1. Subject Models

■ Tube Fitting

Appearance: Some sizes on Union Straight, Union Tee, Unequal Union Straight, Union Elbow, Union Y and Unequal Union Y (only PPW)

[Tube Fitting] Type: PU, PE, PG, PV and PY

[Tube Fitting PP] Type: PPU, PPE, PPG, PPV, PPY, PPW

[SUS304 Tube Fitting] Type: PU□SUS, PE□SUS, PG□SUS, PV□SUS, PY□SUS

[SUS303 like Corrosivity Fitting] Type: SPU, SPE, SPG, SPV, SPY

■ Stop Fitting Series

Appearance: Bulkhead Union (PSM10)

2. Changes

- 1) Change in dimension of the attachment hole height
- 2) Change in overall length
- 3) Change in tube insertion length, body diameter etc.

※Please refer to attached “Appearance dimensions comparison” for the subject models and details of the dimension.

※CAD data is available from October and we will correspond whenever you need until October.

3. **Date of execution** **The change is going to be executed sequentially from November 2015 production.**

Please make inquiries to following sales office.

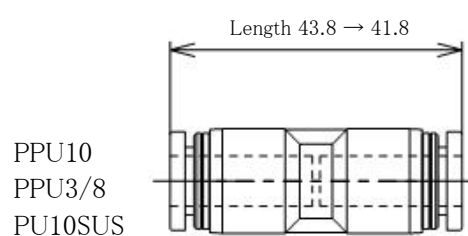
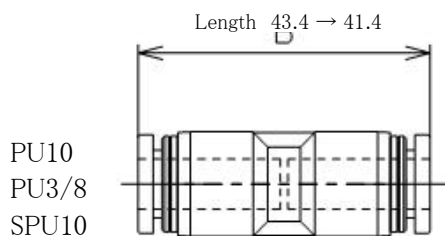
<p>□Overseas Sales Promotion Team TEL: +81-(0)265-76-7751 FAX: +81-(0)265-76-3305 E-mail: intl@pisco.co.jp URL: http://en.pisco.co.jp/</p>
--

Appearance dimensions comparison

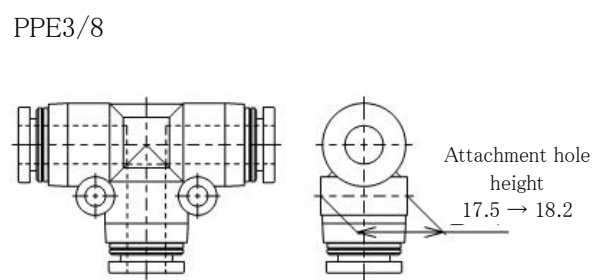
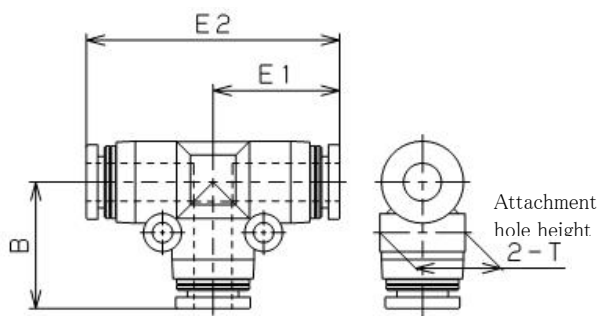
※It includes special made models like -C(Clean-room Package), -W(Light-gray Specification), -W-C (Light-gray Specification & Clean-room package), -UC (Ultra-clean wash & Clean-room Package)、-D (Oil free Specification).

■ Tube Fitting

[Union Straight] :Change in overall length

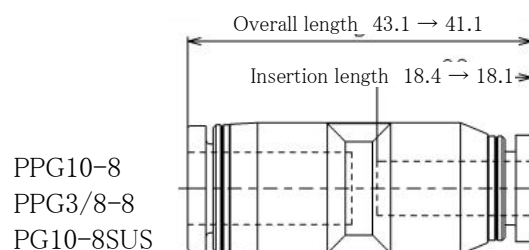
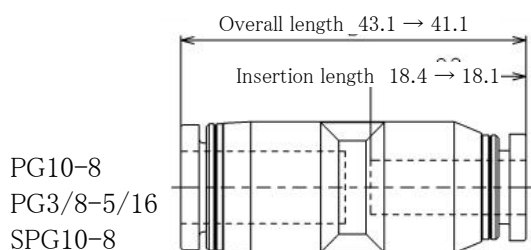


[Union Tee] :Change in dimension of the attachment hole height and overall length



Model	Change	E1	E2	T	B
PE4 (5/32)	old	16.9	33.8	10	16.9
SPE4	new	17.2	34.4	10.4	17.2
PPE4	old	17	34	10	17
PE4SUS	new	17.3	34.6	10.4	17.3

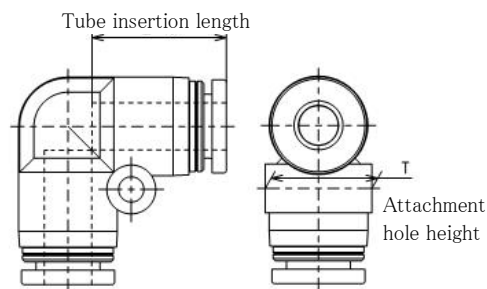
[Unequal Union Straight] :Changes in overall length, tube insertion length



[Union Elbow] : Change in dimension of the attachment hole height and tube insertion length

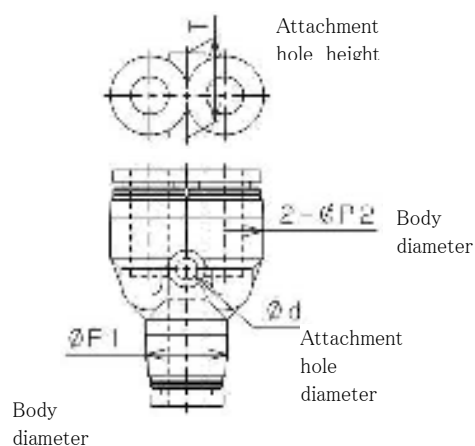
Model	Change	C	T
PV4(5/32) SPV4	old	14.9	10
	new		10.4
PV6(1/4) SPV6	Old	16.9	12.5
	new	17	13.5
PV10(3/8) SPV10	old	20.7	18.2
	new	20.2	
PV3/16	old	17.3	12.5
	new	17.4	13.5

Model	Change	C	T
PPV4 PV4SUS	old	15	10
	new		10.4
PPV6(1/4) PV6SUS	old	17	12.5
	new	17.1	13.5
PPV10(3/8) PV10SUS	old	20.9	18.2
	new	20.4	



[Union Y] : Change in attachment hole height, attachment hole diameter, body diameter

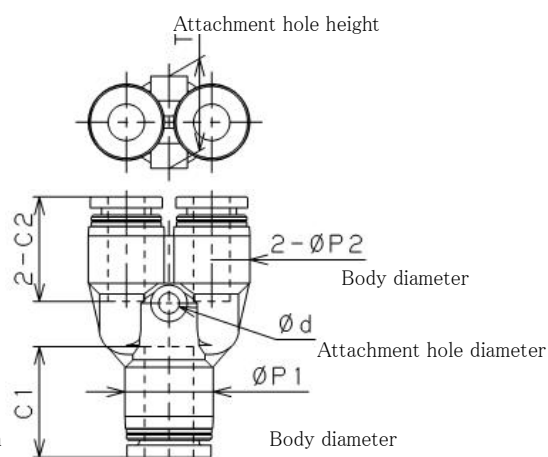
Model	Change	$\phi P1$	$\phi P2$	ϕd	T
PY10(3/8) PPY10(3/8) SPY10 PY10SUS	old	18	18	4.5	18
	new	17.5	17.5	4.2	18.2
PY12(1/2) PPY12(1/2) SPY12 PY12SUS	old	21.5			21
	new	21	21	4.2	21.7



[Unequal Union Y] : Change in attachment hole height dimension, attachment hole diameter, tube insertion length, body diameter

***PPW only**

Model	Change	$\phi P1$	$\phi P2$	C1	C2	ϕd	T
PPW8-6 (PPW8-1/4)	old	15	14.5	18.1	17.1	3.4	15.1
	new	14.5	12.5				
PPW10-8 (PPW3/8-8)	old	18	18	20.9	18.2	4.5	18
	new	17.5	14.5	20.4	18.1		18.2
PPW12-10	old	21.5	21	23.6	20.4	4.2	21
	new	21	17.5			4.5	21.7
PPW1/2-3/8	old	21.5	21	23.9	20.4	4.2	21
	new	21	17.5			4.5	21.7



■ Stop Fitting : Change in overall length

PSM10

